

# **Raychem** NGC-30 Programming Guide

---

ADDENDUM A



---

This document describes new features of the DigiTrace NGC-UIT which are not published in its entirety in the standard document INSTALL-111 Rev 0.

**ERC** (Russia, Kazakhstan, Belarus)  
For other countries contact your local Pentair representative.



---

# 1. VOLTAGE MONITORING AND ALARMING

The current NGC-30 Programming guide describes the option to monitor the voltage via a CVM Module. See for more information chapter 3.3.5. of the Programming Guide.

A low and high voltage alarm has been added to the UIT capabilities. This has impact for several pages on the User Interface Terminal (UIT)

## 1.1 SETUP LOW AND HIGH VOLTAGE ALARM

### 1.1.1 Setup|loop screen

To setup a voltage alarm functionality go to the Setup|Loop screen. Choose Control algorithm "Voltage". Voltage mode allows the NGC-UIT to monitor line voltage from the NGC-30- CRM/-CRMS. The NGC-30- CRM/-CRMS must have a NGC-30-CVM connected to the line current sensor input when selecting voltage mode. As a result, this channel of the NGC-30- CRM/-CRMS cannot be used to control an output device. An RTD can be connected to this channel's input to set up an additional temperature monitoring Loop.

When Voltage is selected in the Mode field a Voltage tab at the bottom becomes selectable.

### 1.1.2 SETUP|VOLTAGE SCREEN

On the SETUP|VOLTAGE SCREEN the High voltage and Low voltage alarms can be set.

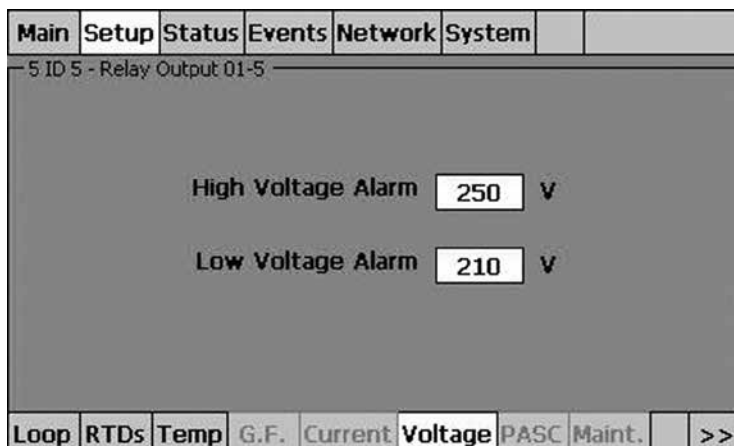


Figure 1: Voltage setup screen

## 1.1.3 SYSTEM|FILTERS SCREEN

The entries on this screen determine how long an alarm condition must exist before the NGCUIT records and signal an alarm condition. This minimizes nuisance alarms by forcing the NGC-UIT to verify that the alarm condition continually exists over the selected period of time before alarming.

<b>Main</b>	<b>Setup</b>	<b>Status</b>	<b>Events</b>	<b>Network</b>	<b>System</b>		
<b>Alarm Filters</b>							
Temperature Alarm		15 min					
Ground Fault Alarm		1 min					
Voltage Alarm		1 min					
Comm Alarm		5 min					
<b>Misc</b>	<b>Filters</b>	<b>Relays</b>	<b>Comm</b>	<b>Clock</b>	<b>Password</b>	<b>Maint.</b>	

Figure 2: Filter screen

For Voltage alarms the following options are available: Choices: 15 sec, 1, 5, 15, 30, or 60 min  
Default: 1 min

## 1.2 ALARMING AN MONITORING

### 1.2.1 EVENTS SCREEN

The Events screen displays a chronological history of all events and alarms. It retains the most recent 2000 entries; after 2000 entries are recorded, the oldest entries are discarded as new entries are added.

By pressing the Events, Press for Alarms heading, the Events display filters events or alarms by type. Filters have been added to show separately Low and High Voltage alarms. (Note: The program automatically skips an alarm type if no alarms of that type exist).

<b>Main</b>	<b>Setup</b>	<b>Status</b>	<b>Events</b>	<b>Network</b>	<b>System</b>		
<b>Alarms/Events</b>							
No.	Time	Loop	Alarms - Low Voltage				
6	14:48 01-Mar-07	5	Low Voltage				

Figure 3: Events – Low Voltage alarm picture

### 1.2.2 MAIN SCREEN

The measured voltage is displayed on the main screen in the status column .The standard colour coding is valid for voltage monitoring (green when within low and high alarm setting; red when in alarm condition)

Main	Setup	Status	Events	Network	System		
Status - [ 15:35 01-Mar-07 ]							
Loop	ID	°C	SetPt	DB	Amps	G.F.	Status
1	ID 1	23	10	5	0.0	0	Off
4	ID 4	45	10	5	0.0	0	Off
5	ID 5	----	---	---	---	---	225V

Figure 4: Main screen

---

## 2. MOUSE VISIBILITY

Under normal conditions the UIT is operated via the touch screen functionality. There's no mouse pointer visible on the screen.

Under special project conditions it could be required that the UIT must operate via a mouse, tracker ball or joystick. Therefore a toggle button has been added to the UIT. It will enable / disable the mouse functionality in the UIT software.

### 2.1 MOUSE ON-OFF

To enable or disable the mouse functionality go to the screen SYSTEM|MISC

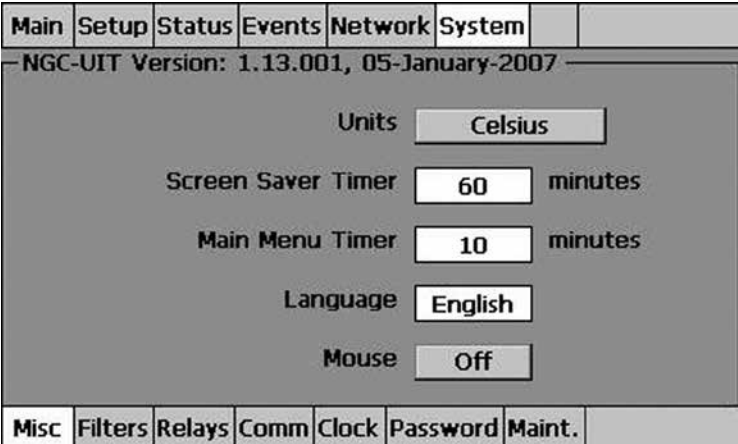


Figure 5: Mouse toggle button

By clicking on the Mouse On or Mouse Off button the mouse will be enabled or disabled.

**BELGIË / BELGIQUE**

Tel. +32 16 21 35 02  
Fax +32 16 21 36 04  
salesbelux@pentair.com

**BULGARIA**

Tel./fax +359 56 86 68 86  
fax +359 56 86 68 86  
salesee@pentair.com

**ČESKÁ REPUBLIKA**

Tel. +420 241 009 215  
Fax +420 241 009 219  
czechinfo@pentair.com

**DANMARK**

Tel. +45 70 11 04 00  
Fax +45 70 11 04 01  
salesdk@pentair.com

**DEUTSCHLAND**

Tel. 0800 1818205  
Fax 0800 1818204  
salesde@pentair.com

**ESPAÑA**

Tel. +34 902 125 307  
Fax +34 91 640 29 90  
ptm-sales-es@pentair.com

**FRANCE**

Tél. 0800 906045  
Fax 0800 906003  
salesfr@pentair.com

**HRVATSKA**

Tel. +385 1 605 01 88  
Fax +385 1 605 01 88  
salesee@pentair.com

**ITALIA**

Tel. +39 02 577 61 51  
Fax +39 02 577 61 55 28  
salesit@pentair.com

**LIETUVA/LATVIJA/EESTI**

Tel. +370 5 2136633  
Fax +370 5 2330084  
info.baltic@pentair.com

**MAGYARORSZÁG**

Tel. +36 1 253 7617  
Fax +36 1 253 7618  
saleshu@pentair.com

**NEDERLAND**

Tel. 0800 0224978  
Fax 0800 0224993  
salesnl@pentair.com

**NORGE**

Tel. +47 66 81 79 90  
Fax +47 66 80 83 92  
salesno@pentair.com

**ÖSTERREICH**

Tel. 0800 297410  
Fax 0800 297409  
info-ptm-at@pentair.com

**POLSKA**

Tel. +48 22 331 29 50  
Fax +48 22 331 29 51  
salespl@pentair.com

**ROMANIA**

Tel. +40 21 317 92 87  
Fax +40 21 317 92 87  
salesro@pentair.com

**SCHWEIZ / SUISSE**

Tel. 0800 551308  
Fax 0800 551309  
info-ptm-ch@pentair.com

**SUOMI**

Puh. 0800 11 67 99  
Telekopio 0800 11 86 74  
salesfi@pentair.com

**SVERIGE**

Tel. +46 31 335 58 00  
Fax +46 31 335 58 99  
salesse@pentair.com

**TÜRKIYE**

Tel. +90 530 977 64 67  
Fax +32 16 21 36 04  
ptm-sales-tr@pentair.com

**UNITED KINGDOM**

Tel. 0800 969013  
Fax 0800 968624  
salesthermaluk@pentair.com

**РОССИЯ**

Тел. +7 495 926 18 85  
Факс +7 495 926 18 86  
salesru@pentair.com

**REPUBLIC OF KAZAKHSTAN**

Tel. +7 495 926 18 85  
Fax +7 495 926 18 86  
saleskz@pentair.com

**SERBIA AND MONTENEGRO**

Tel. +381 230 401 770  
Fax +381 230 401 770  
salesee@pentair.com

**USA**

Tel. +1 650 216 15 26  
Fax +1 650 474 77 11  
salesus@pentair.com



[WWW.PENTAIRTHERMAL.COM](http://WWW.PENTAIRTHERMAL.COM)

All Pentair trademarks and logos are owned by Pentair or its global affiliates. Pentair reserves the right to change specifications without prior notice.

© 2007-2014 Pentair.